

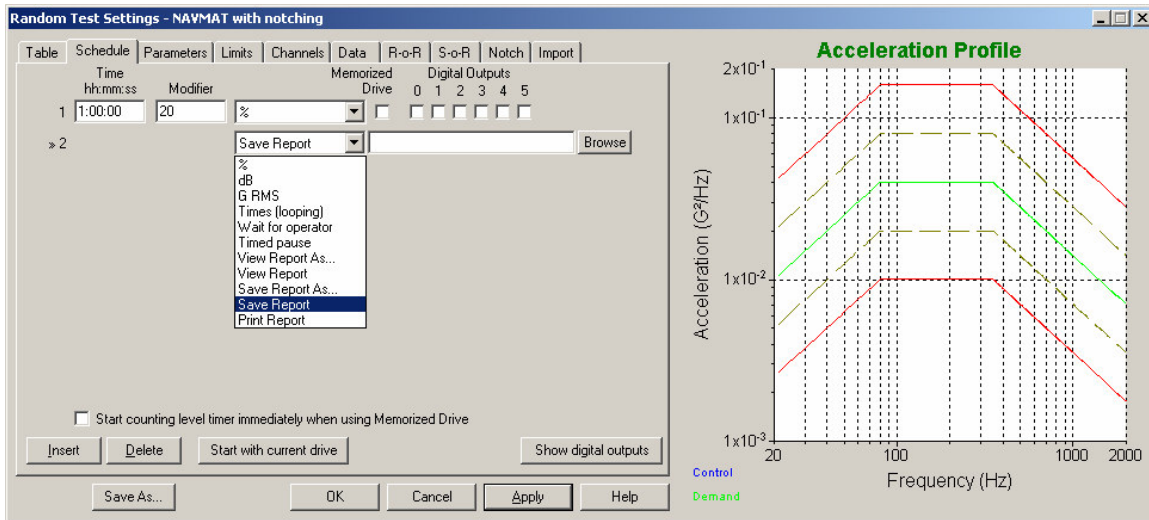


Scheduling Reports

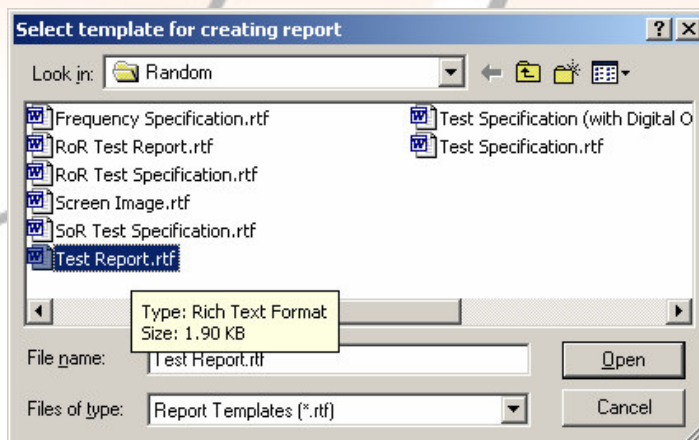
Q. How do I set up my profile to automatically generate a report when my test is complete?

A. To automatically generate a report, follow these simple steps;

1. Go to the test *Settings* and select the **Schedule** tab.
2. Next, **Insert** a row at the end of your test schedule.
3. In the pull-down section (where the default is generally %), select **Save Report**.

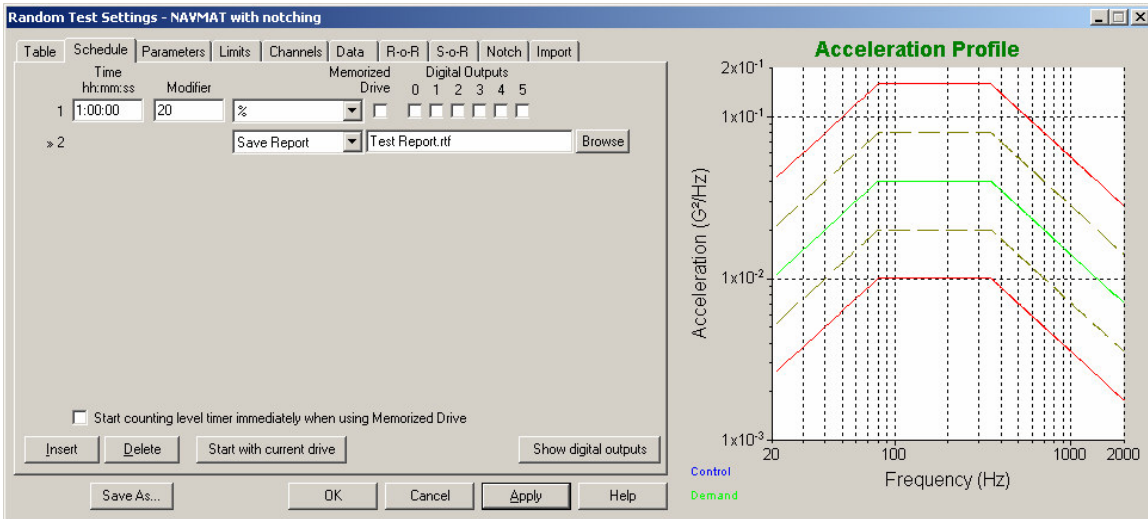


4. Next, select **Browse**, next to **Save Report**, to choose the report template you want VibrationVIEW to use when generating the report.





The **Schedule** tab should look something like this;



5. Now select the **Data** tab to define where the report will be saved. Use the **Browse** button to set up this location. The Data storage directory you set here will be location that *Save data to disk* data will be stored also, if you check any of the boxes (i.e. *at end of test*).

Note: *Graph annotation lines* at the bottom of the **Data** tab can be filled in for each test with information such as test sample number, test technician, shaker serial number, etc. This information can automatically be included in the report.

