

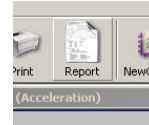


Custom Report Templates

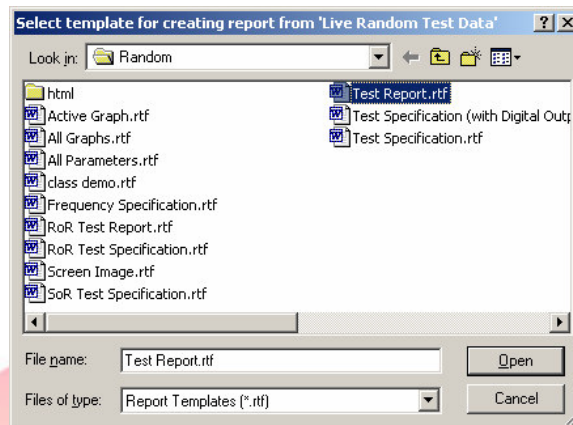
Q. How do I make a custom report template?

A. To quickly make a custom report template, follow these simple steps;

1. Click on the **Report** button to open the report template folder.



2. **Right** click on the template you would like to modify.



3. This opens the template in Rich Text Format. You can then edit the parameters you would like shown on your reports. For details on these parameters please see your manual, or in VibrationVIEW, go to **Help..How To...Create customized reports**. There you will find a section for each mode of testing (sine, random, etc). The parameters found in the Help file can be copied and paste into your templates. Also, you can paste your company logo into this template. Note: Separate templates are used for each mode of testing.

